



GMT MONTHLY MEMBERSHIP PROGRESS REPORT

Results as of: 6/30/2018

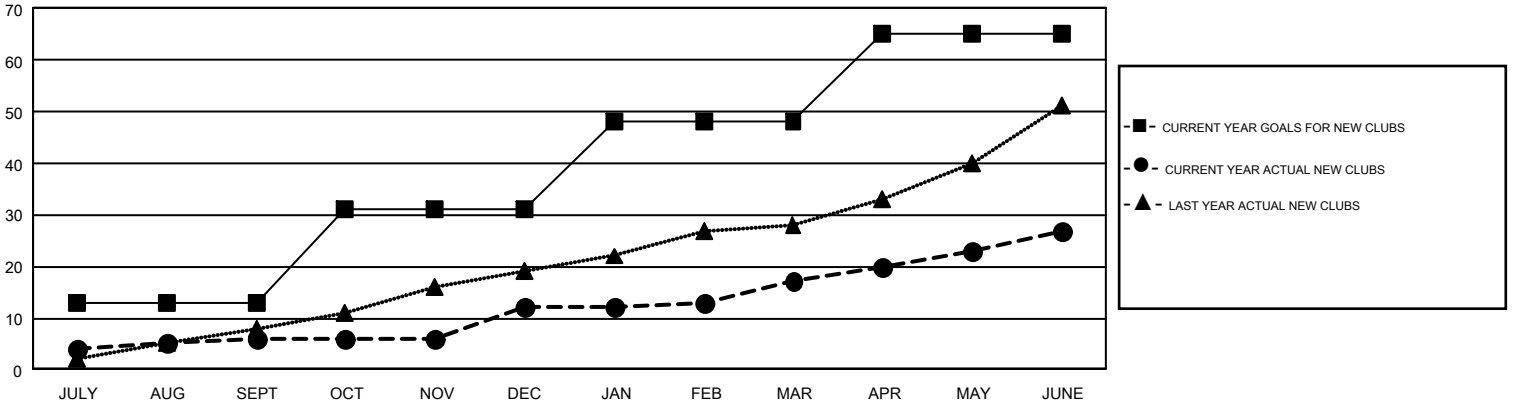
GMT Constitutional Area 1, Group H

GMT: HOWARD HUDSON

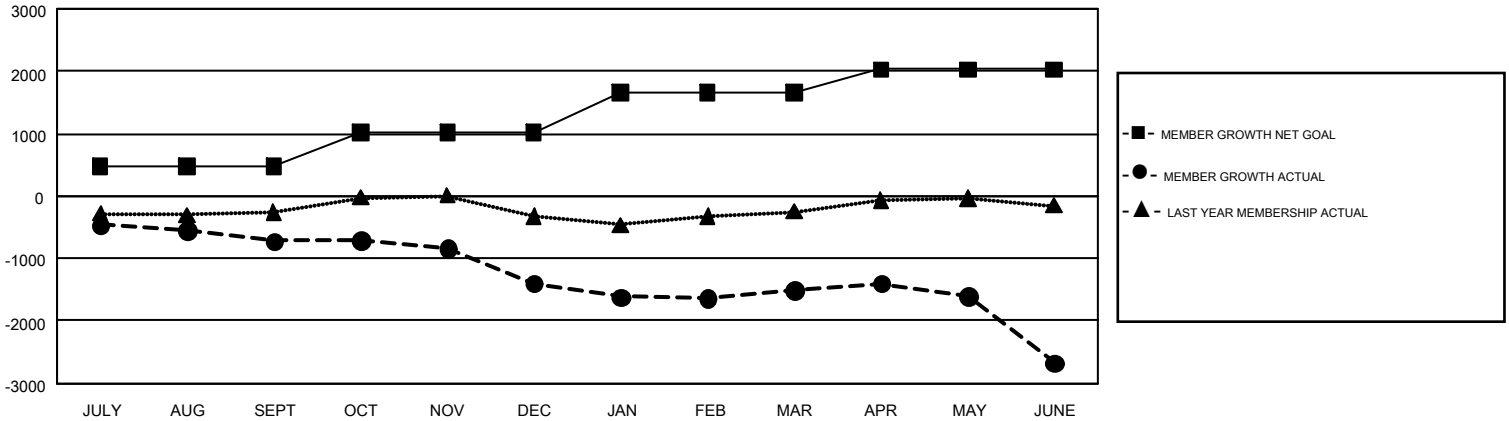
REPORT DOES NOT INCLUDE CLUBS IN UNDISTRICTED AREAS.

Clubs				Members			
RESULTS FOR 2017-2018				RESULTS FOR 2017-2018			
QUARTER	NEW CLUB GOAL	NEW CLUBS	DROPPED CLUBS	QUARTER	MEMBER GROWTH NET GOAL	MEMBER GROWTH ACTUAL	DROPPED MEMBERS ACTUAL (including transfers)
JULY/AUG/SEPT	13	6	8	JULY/AUG/SEPT	481	1,446	1,923
OCT/NOV/DEC	18	6	26	OCT/NOV/DEC	541	1,130	1,731
JAN/FEB/MAR	17	5	8	JAN/FEB/MAR	629	1,400	1,355
APR/MAY/JUNE	17	10	22	APR/MAY/JUNE	379	2,094	3,065

GOALS AND ACTUAL NEW CLUBS CUMULATIVE



GOALS AND ACTUAL MEMBERS CUMULATIVE



DROPPED CLUBS: 64	1,030 CLUBS OF 1,447 ADDED 1 OR MORE NEW MEMBERS	<u>GENDER DISTRIBUTION</u>	
<u>DROPPED MEMBERS</u>		MALE	23,234 (62.34%)
DECEASED	557	FEMALE	14,038 (37.66%)
CLUB CANCELLED	518	TOTAL FAMILY UNIT MEMBERS	0
OTHER	6,996	FAMILY MEMBERS PAYING HALF DUES	0
TOTAL	8,071		

[CLICK HERE FOR CUMULATIVE MEMBERSHIP DATA](#)